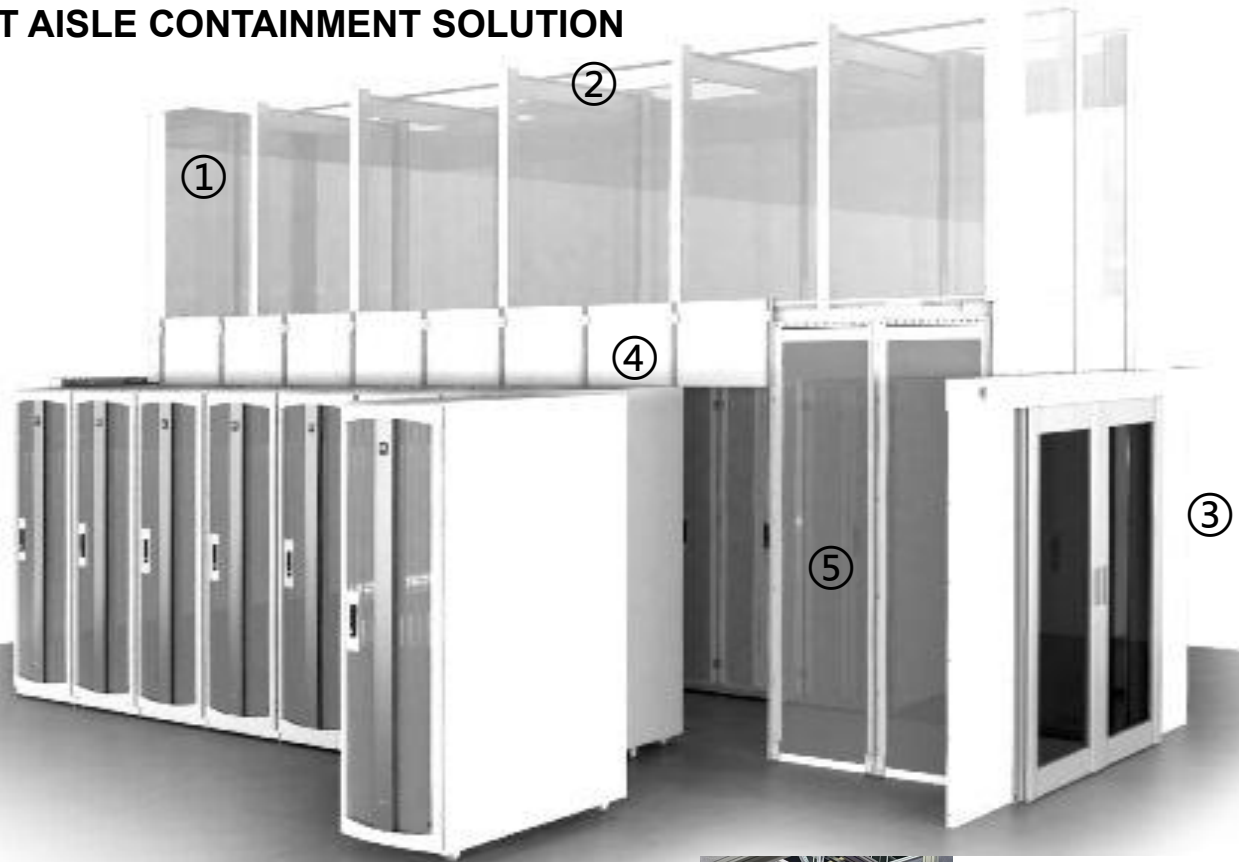




Containment System
Simple, Flexible and Efficient
Containment for Every Data Center

HOT AISLE CONTAINMENT SOLUTION



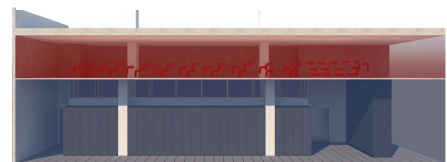
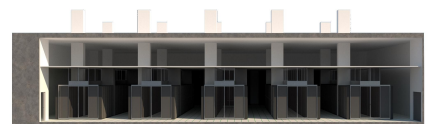
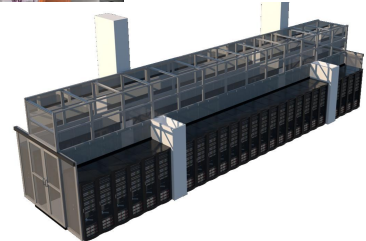
① **Hot Aisle Containment** – Cabinet-independent frame and translucent exhaust duct cover the contained aisle to capture and vent airflow out of the aisle. Used as part of a closed return for the air handling system.

② **Edge Seal** – Flexible, curved seal used around the top of the duct to create a complete seal with overhead drop ceiling tiles.

③ **Aisle Containment Double Door Assembly** – Sliding double doors with automatic closing features and large transparent panels. Attaches to the ends of the Frame Supported Exhaust Duct to seal the ends of the contained aisle (this system not compatible with Single Door Assembly).

④ **Adjustable Height Filler Panel/Brush** –Adjustable height panels/universal cabinet end panel or brush used above standard equipment cabinets to seal gaps between the 52U Frame Supported Exhaust Duct and the cabinets. Alternately, Universal Cabinet End Panels adjusts in both height and width.

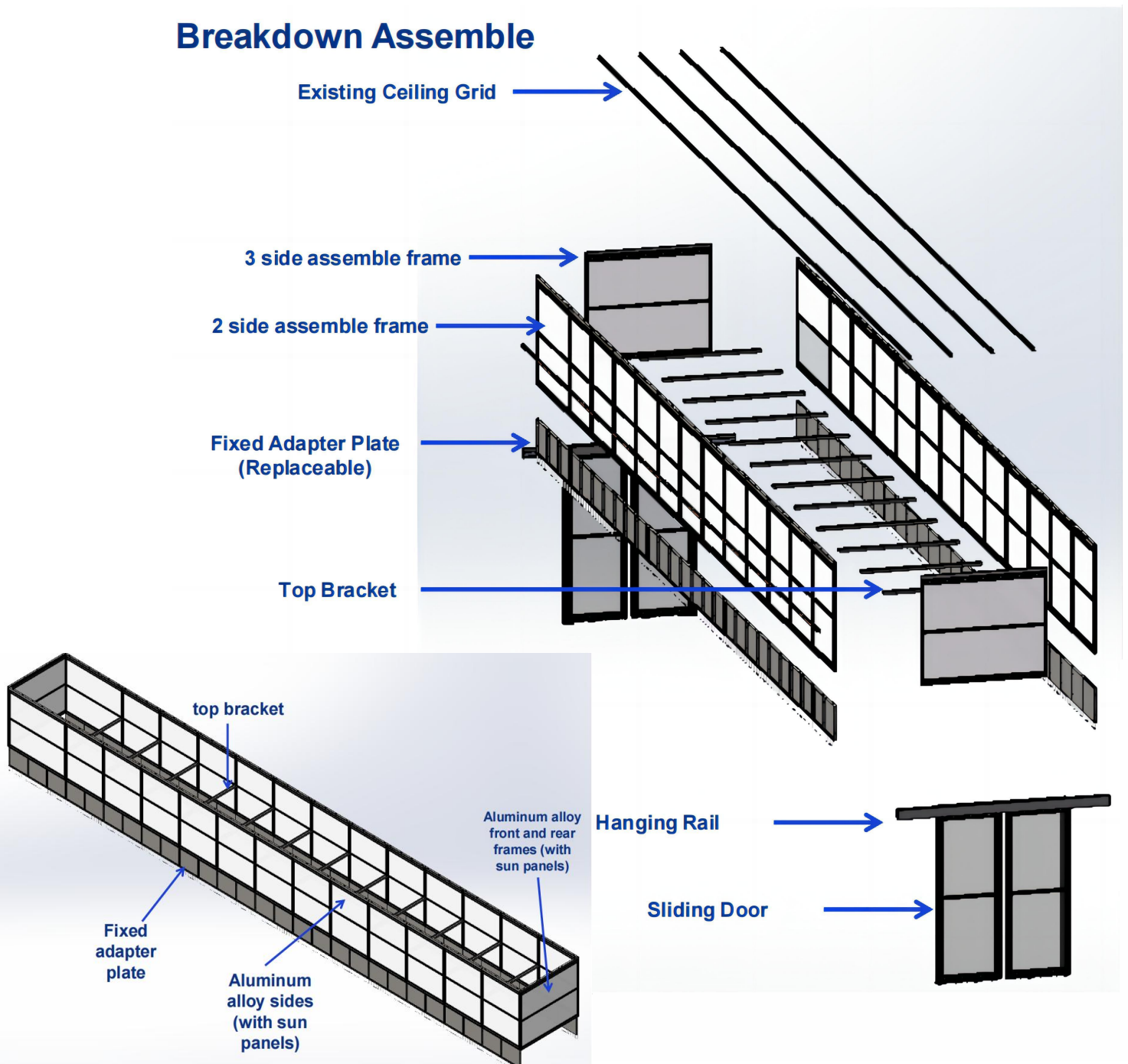
⑤ **Full Height Blanking Panel** – Translucent panel and seal used to fill gaps where entire cabinets are omitted from the cabinet row. Easy to trim to match required width. Supports “roll-in/roll-out” deployment and variable length cabinet rows created when cabinets of differing widths are deployed in the same row.



SOLUTION OVERVIEW

- Flexible frame supported duct installed before the cabinets allows you to add, remove or omit cabinets as required
- Compatible with virtually any mix of cabinets; any width and heights
- Large spans with 12'(3 m) to 20'(6 m) clearance between frame support posts for bayed cabinets
- Built-in height, width and depth adjustments on frame beams, lateral supports and panels accommodate site differences and existing conditions reducing the need for complex, time-consuming, field modification or special-ordered parts
- Translucent duct and transparent door panels allow light to enter the contained aisle
- Doors close automatically to maintain containment and reduce recovery time
- A complete solution maximizes performance with baffles to seal around and within cabinets and the contained aisle
- Durable construction and maintenance-free design provide years of use

Breakdown Assemble



Sliding Doors-Customizable Solution for HAC

Features & Benefits

- No threshold design prevents tripping
- Perimeter compression gaskets efficiently seal and minimize air leakage
- Sturdy aluminum framing
- Clean panel option adheres to NFPA codes
- Ergonomically designed with angled handles to reduce pinch points
- Easy installation with integrated door slide locks

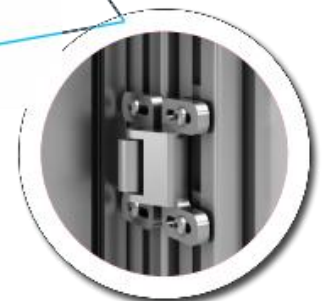
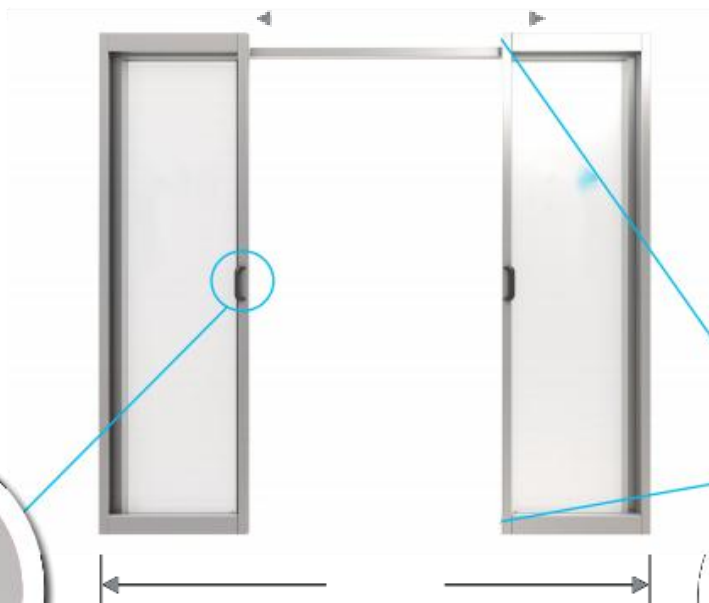
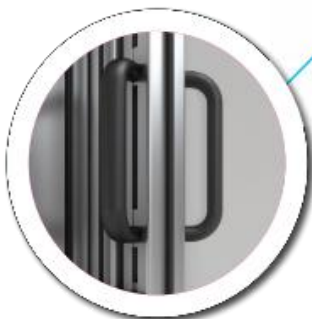
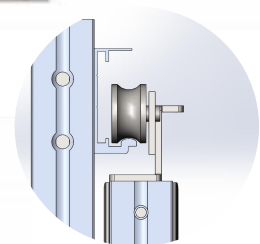
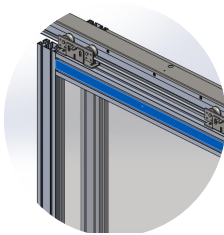
Hardware

Standard features include:

- Door slide locks
- Door stop bumpers
- Angled door handles
- Spring loaded double ball door catch
- Auto-close available

Weight

- 200 lbs (91kgs) – Clear polycarbonate



Hot Aisle Containment

Features & Benefits

- No threshold design prevents tripping
- Factory installed perimeter compression gasket system
- Sturdy aluminum supports • Custom attachments (locks, stays)
- Side panels attach easily • Easy installation
- Ergonomically designed with angled handles to reduce pinch points • Auto-close option available

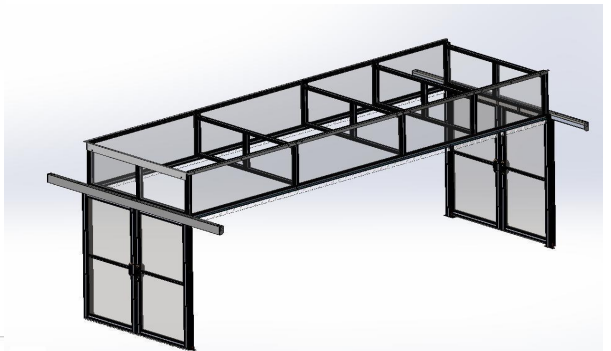
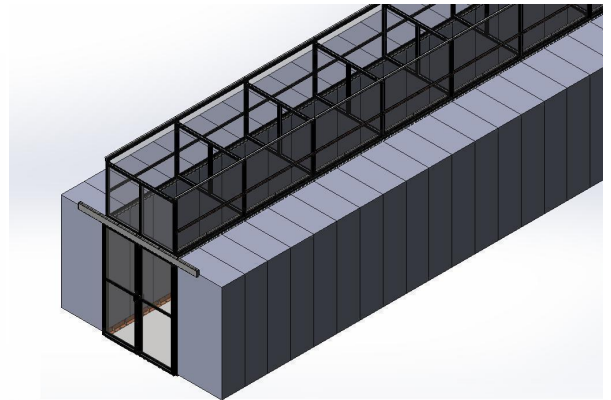
Multiwall Polycarbonate for the wall panel

- Semi-transparent
- Compliant to the new NFPA 75 2013 requirements
- ASTM E-84 and ASTM D-635 listed
- 8mm thick with edge-sealing gasket

Rigid Walls

Size	
Max Size	50" x 98"
Profile Width	1 3/16"
Standard Finish	Clear
Door & Frame	
Material	8040 T-5 Temper Aluminum
Tensile Strength	30,000 psi

Panel Options	Test	Result
8 mm Twin-Wall Polycarbonate (Self-ignition temperature: 450 deg C)	ASTM E-84	Class A
	ASTM D635	CC1



Cabinet and Thermal Management Accessories

Combine the following cabinets and cabinet-specific accessories to seal gaps and block airflow through and around cabinets.

**ADVISABLE STATIC
LOAD CAPACITY UP
TO 1800KG.
CUSTOMIZATION
UPON REQUEST.**

ACTUAL THICKNESS

VERTICAL MOUNTING RAILS

2.2_(MM)

MOUNTING BEAM

2.2_(MM)

FRAME

1.7_(MM)

FRONT DOOR

1.4_(MM)

REAR DOOR

1.4_(MM)

SIDE PANEL

1.0_(MM)



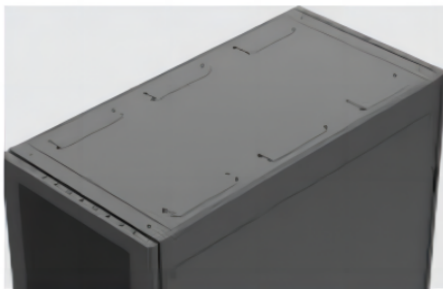


STANDARD

Comply with EIA-310-E, IEC297-2, DIN41491 PART1, DIN41494 PART7, GB/T3047.2-92 standard, compatible with ETSI standard.

FEATURES

- Various sizes and parts are available according to different application demand.
- Welded frame, demountable structure design, light duty but sturdy and flexible.
- Closed-able cable routing at top and bottom panel without tools. Brush panel to prevent dust and outside things.
- Two cable management rails are equipped at the rear of the cabinet for cable management for PDU assembly.
- Embedded side panel, tool free in assembling and dismantling, lock is optional.
- Front door and rear door can be interchanged quickly without tools, opening angle 130°, convenient for equipments installation and maintenance.
- Rotary door handle, keys are universal to front and rear doors for all KJ series cabinets.
- With cabinets connector. Complete accessories.
- Provided with adjustable feet, maximum static loading is 1800kgs. Surface treatment procedure is degreasing-->pickling-->anti-rust and phosphorization-->water cleaning-->powder coating, ■ RoHS compliant.



Several cable input panels meets different location cable routing request.



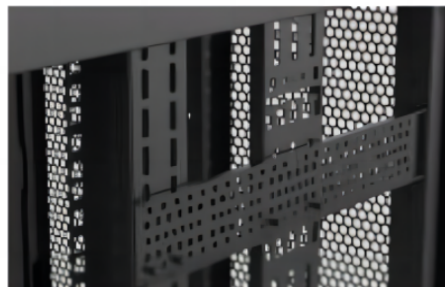
Spring Lock



With cable entries on the bottom panel



Side panel in half height, With connector



Adjustable Mounting rails



Cable management rails in rear

Mounting PDU without tools
Mounting vertical cable managers

1 Top Panel

2 Rear door

3 Side panel

4 Bottom Panel

5 Front door

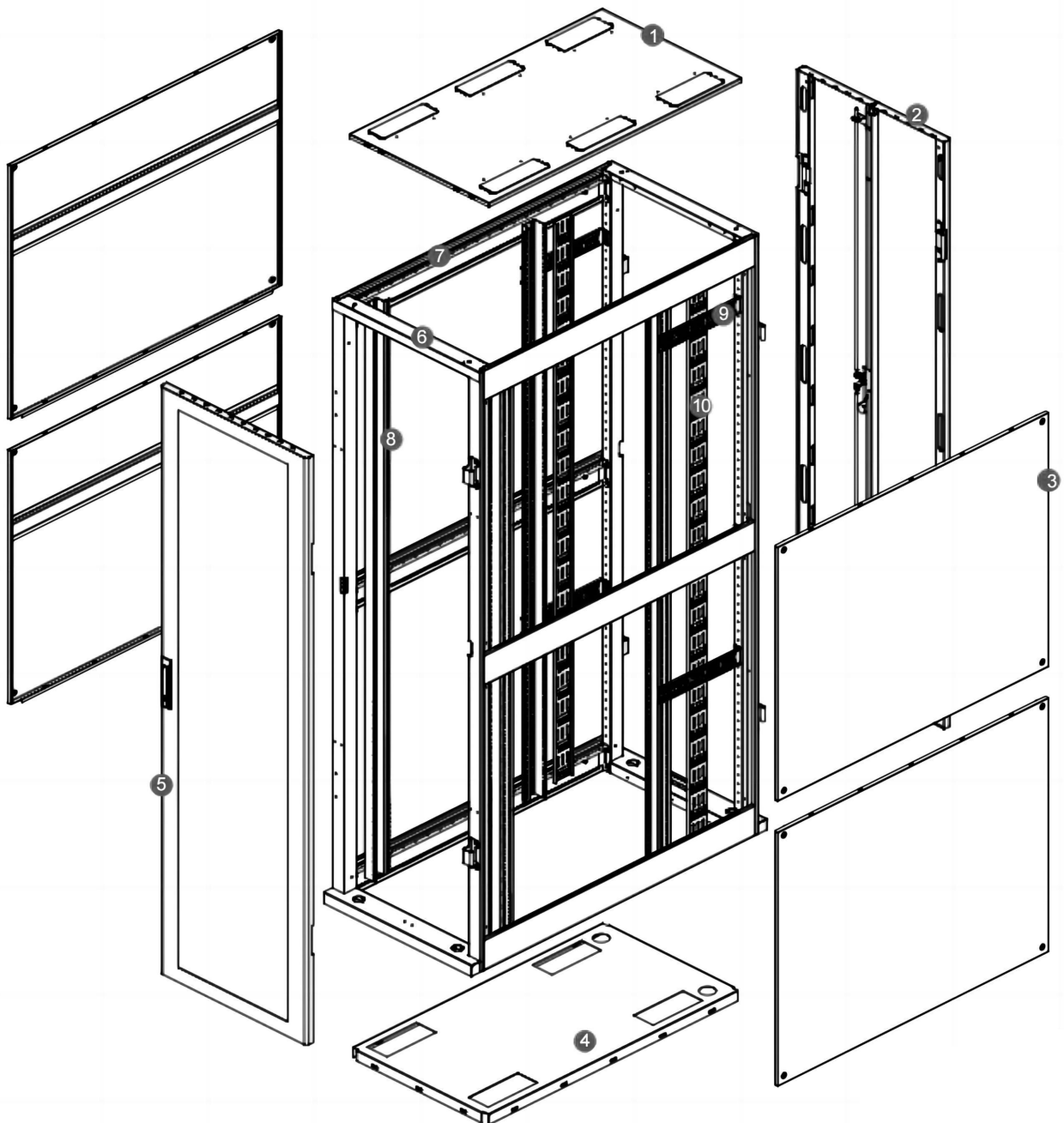
6 Frame

7 Side Brace

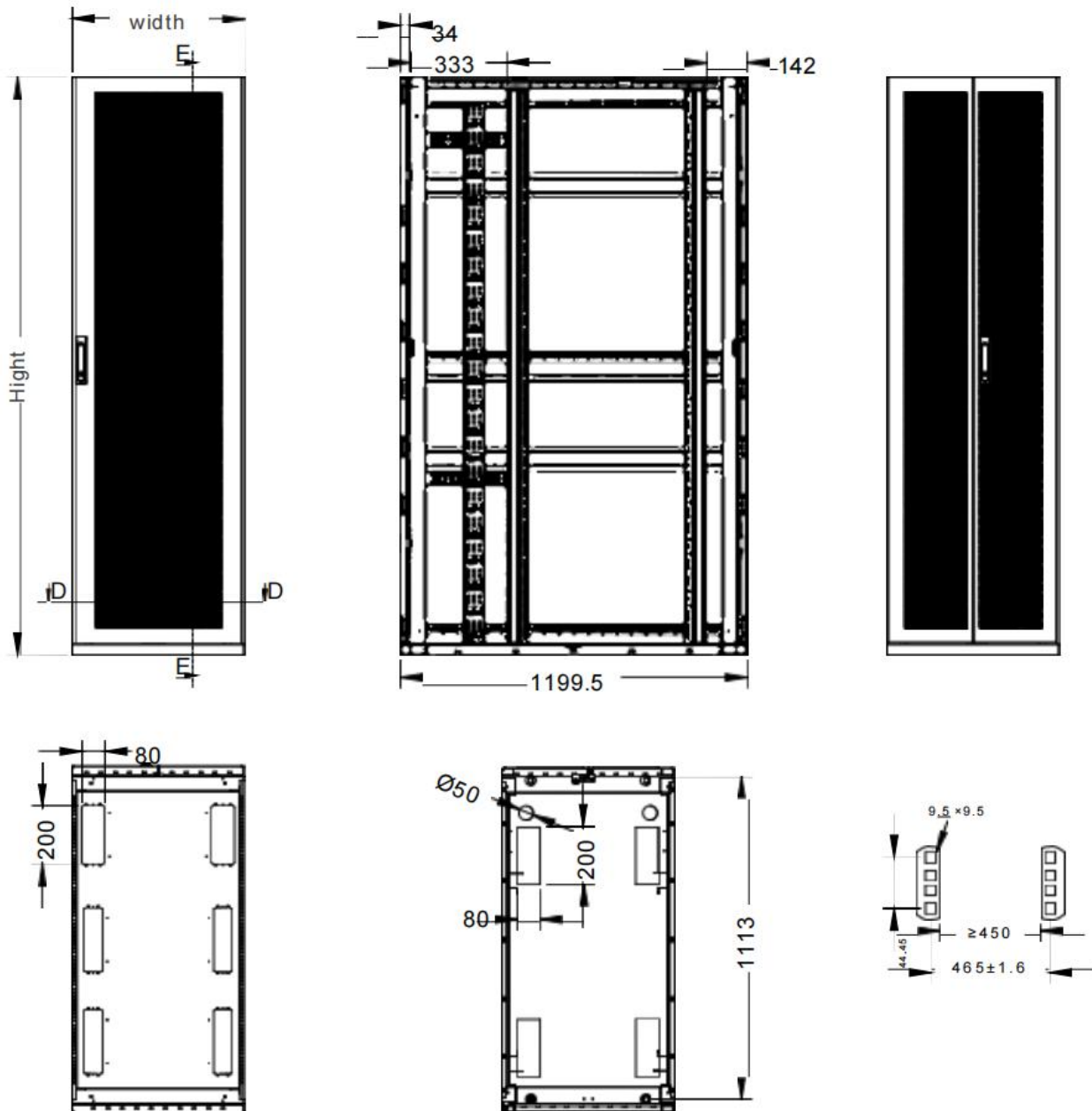
8 Mounting Beam

9 perforated holder

10 cable lashing



S/N	Parts name	Quantity	Unit	Material	Surface finish	Remark
1	Top panel	1	Piece	SPCC cold rolled steel t1.2	powder coated	---
2	Bottom panel	1	Piece	SPCC cold rolled steel t1.2	powder coated	---
3	Frame	2	Piece	SPCC cold rolled steel t1.5	powder coated	---
4	Side brace	6	Piece	SPCC cold rolled steel t1.5	powder coated	---
5	Vertical mounting rails	4	Piece	SPCC cold rolled steel t2.0	powder coated	---
6	Front door	1	Piece	SPCC cold rolled steel t1.2	powder coated	---
7	Rear door	1	Piece	SPCC cold rolled steel t1.2	powder coated	---
8	Side panel	4	Piece	SPCC cold rolled steel t0.8	powder coated	---
9	cable lashing	2	Piece	SPCC cold rolled steel t1.2	powder coated	Optional
10	Spring lock	2	Piece	Zinc alloy	Black	With 2 keys
13	M6 Cage Nuts and Screws	40	Set	---	---	
14	Cage nut hook	1	Piece	---	---	



HOW TO GET STARTED

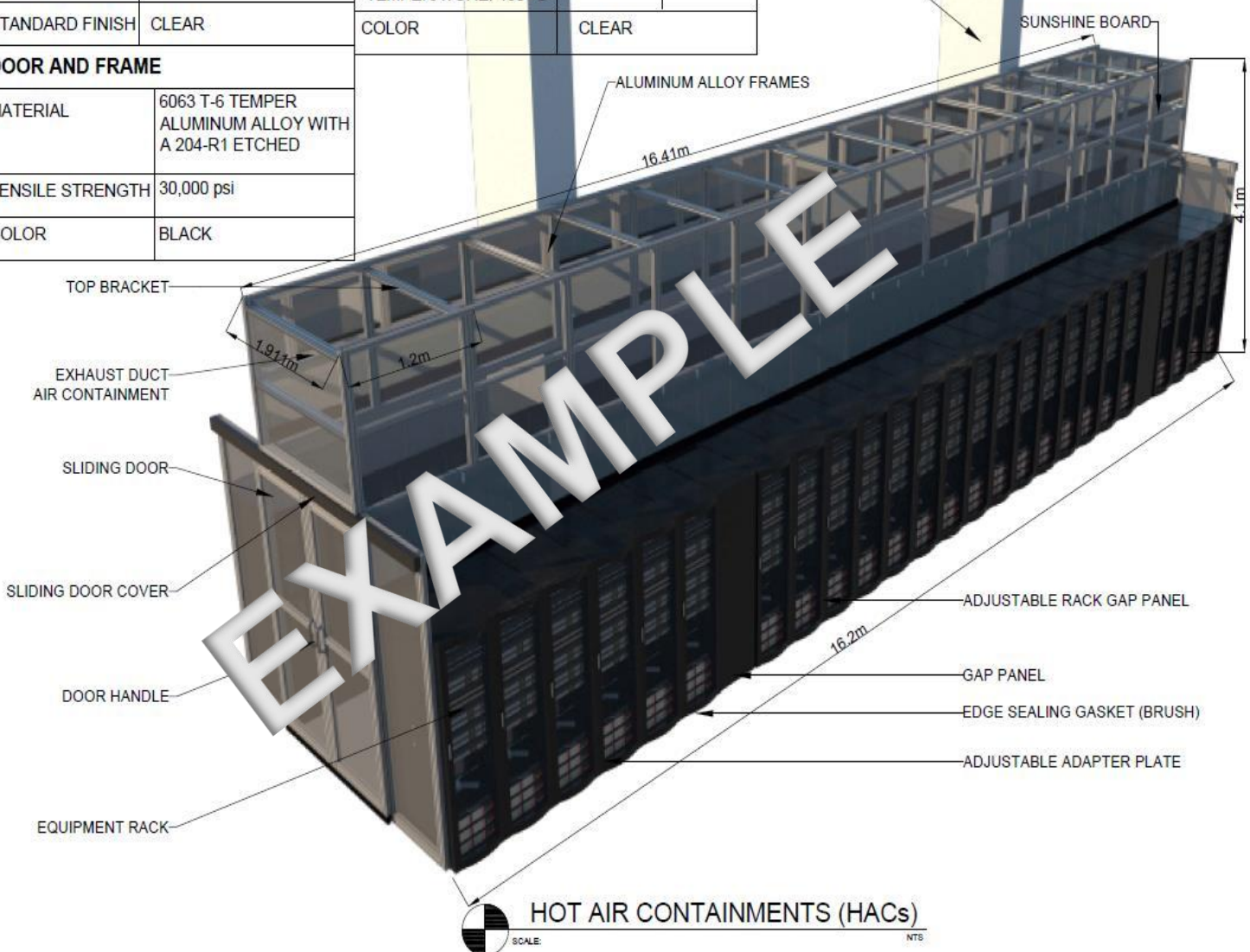
The specific combination of components needed to create a complete Frame Supported Hot Aisle Containment (HAC) Solution will depend on a number of factors including room layout, ceiling height, whether there is a slab or raised access floor and what types of cabinet models are selected.

To ensure you have a complete solution that addresses site and cabinet-specific requirements, please contact LILA's Technical Support for assistance in developing a Bill of Materials (BOM).

Based on your input, LILA's Technical Support will propose a complete solution with a drawing and detailed BOM. LILA will take the time to explain each selection, so you have a complete understanding of how the LILA's solutions will provide the desired results.

RIGID WALLS

SIZE	PANEL OPTIONS	TEST	RESULT	PROPOSED QTY	PHASE	
MAX SIZE	63" x 71"	8 mm TWIN-WALL POLYCARBONATE (SELF-IGNITION) TEMPERATURE: 450 °C	ASTM E-84	CLASS A	25	1A
PROFILE WIDTH	1 ³ / ₁₆ "		ASTM D635	CC1		
STANDARD FINISH	CLEAR	COLOR	CLEAR			
DOOR AND FRAME						
MATERIAL	6063 T-6 TEMPER ALUMINUM ALLOY WITH A 204-R1 ETCHED					
TENSILE STRENGTH	30,000 psi					
COLOR	BLACK					





LILA TECHNOLOGIES SDN. BHD.
202301041075 (1534994-A)

HQ Office:

No. 9-1, One Puchong Business Park,
Jalan OP 1/6, Bandar Puchong Jaya,
47100 Puchong, Selangor Darul Ehsan,
Malaysia.

E : Info@lila-technologies.com [General Enquiry]

E : Sales@lila-technologies.com [Sales Enquiry]

T : +6017 600 3877

F : +603 8080 7716

R&D Center:

No.49, Jalan TPP 1/11,
Taman Perindustrian Puchong,
47100 Puchong, Selangor Darul Ehsan,
Malaysia.



LILA reserves the right to amend product information without prior notice. Care has been taken to ensure that the contents of this publication are accurate, but LILA do not accept responsibility for errors or for information that is found to be misleading or outdated. Suggestions for, or description of, technical specifications and the end use or application of products are provided in good faith and should be verified prior to use.



LILA TECHNOLOGIES SDN. BHD.
202301041075 (1534994-A)
No. 9-1, One Puchong Business Park,
Jalan OP 1/6, Bandar Puchong Jaya,
47100 Puchong, Selangor Darul Ehsan, Malaysia.
T: +6017 600 3877 F: +603 8080 7716
W: www.lila-technologies.com